

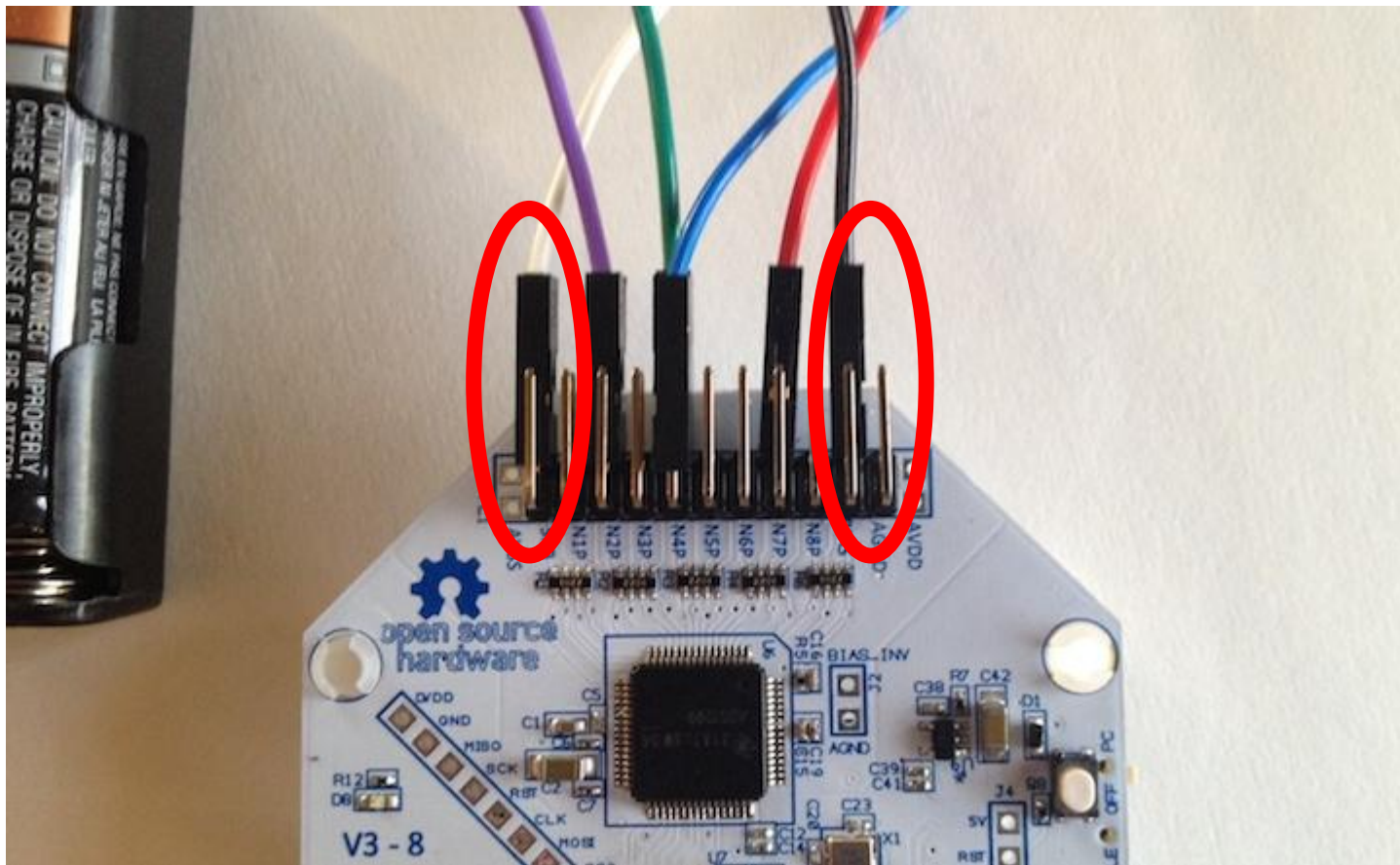
Getting and checking EEG signals

Demo Outline

1. Connect Reference+ Bias
2. Attach Reference + Bias to ears
3. If using wet electrodes, attach to designated 10-20 positions (rough estimates are ok)
4. Plug dongle into Computer
5. Turn on OpenBCI
6. Check that communication exists (blinky blue LED)
7. Open OpenBCI GUI
8. Follow steps to stream data
9. Visually check signal quality

Heavily based on OpenBCI tutorial: <http://docs.openbci.com/tutorials/01-GettingStarted>

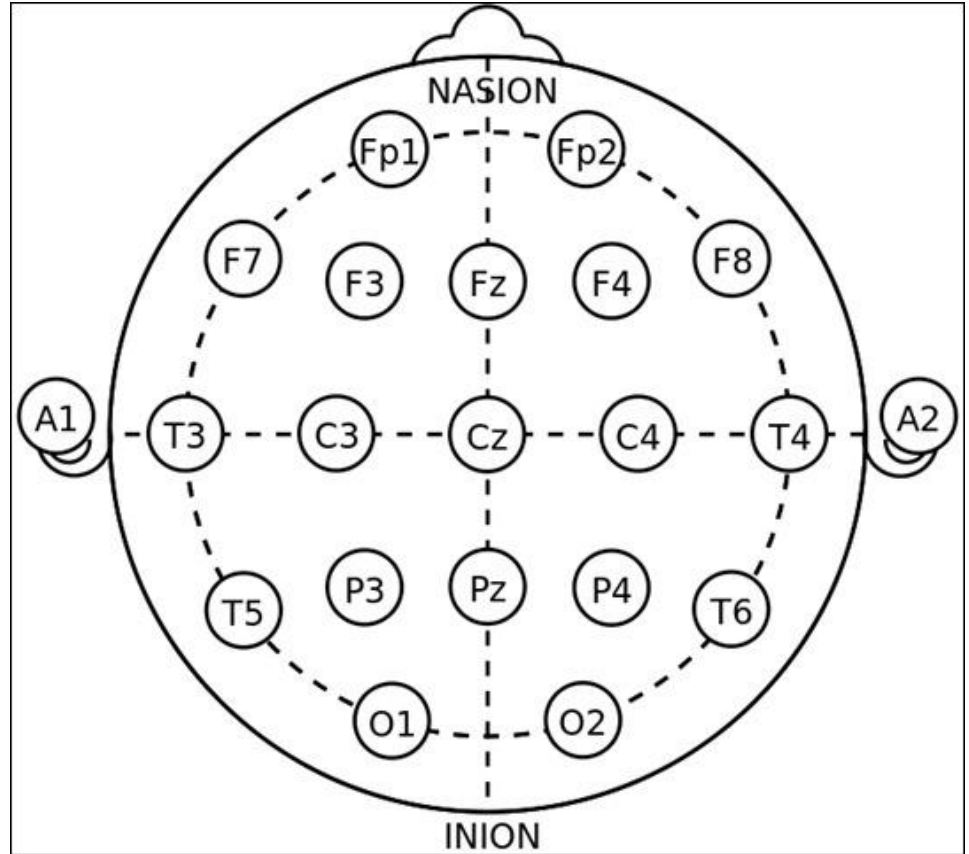
Connect reference and bias



Attach reference and bias to ears



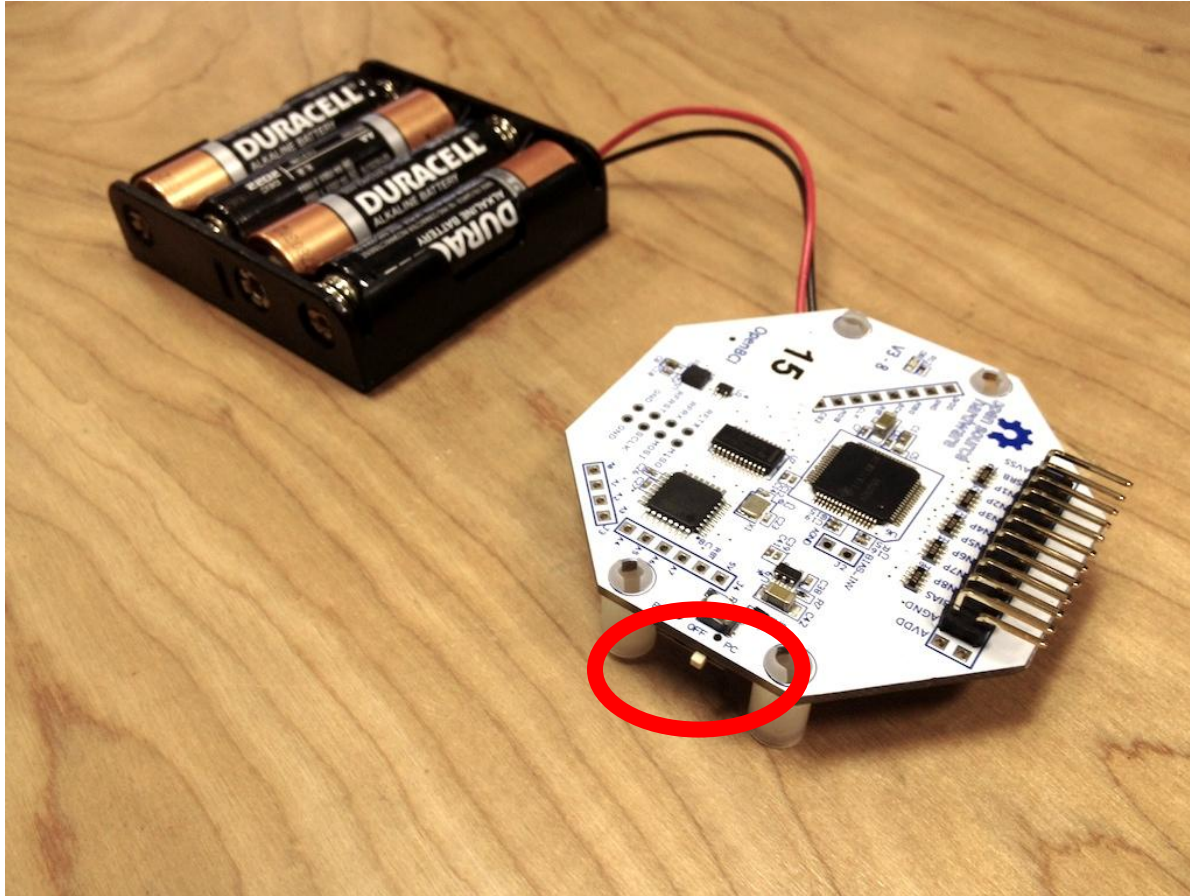
Attach to predetermined 10-20 positions



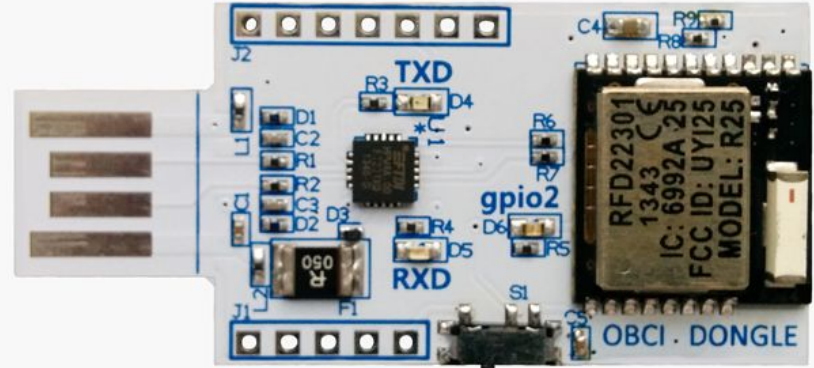
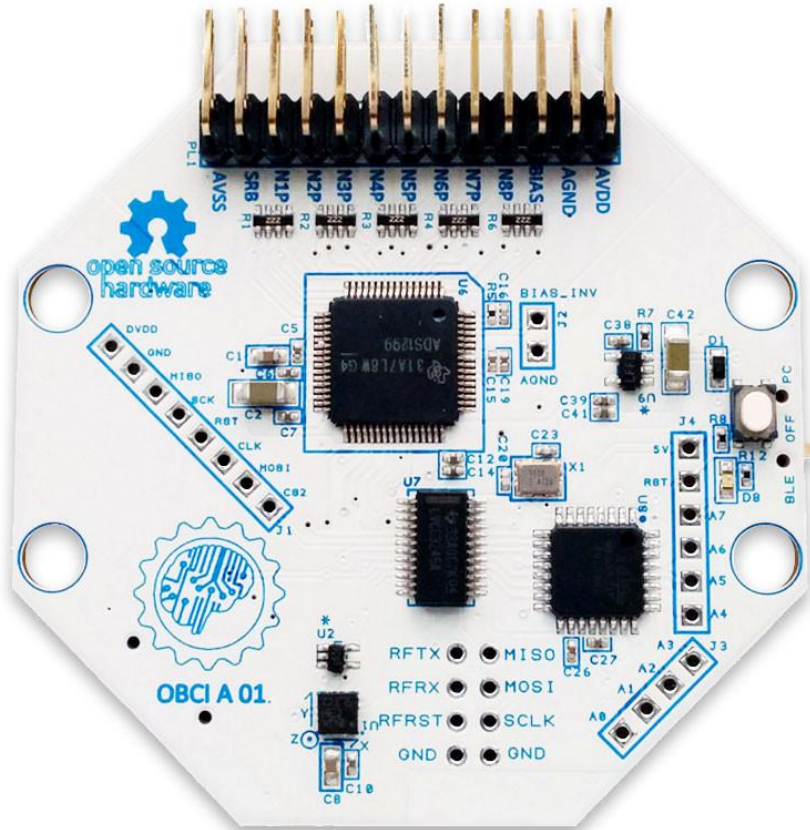
Plug dongle into computer



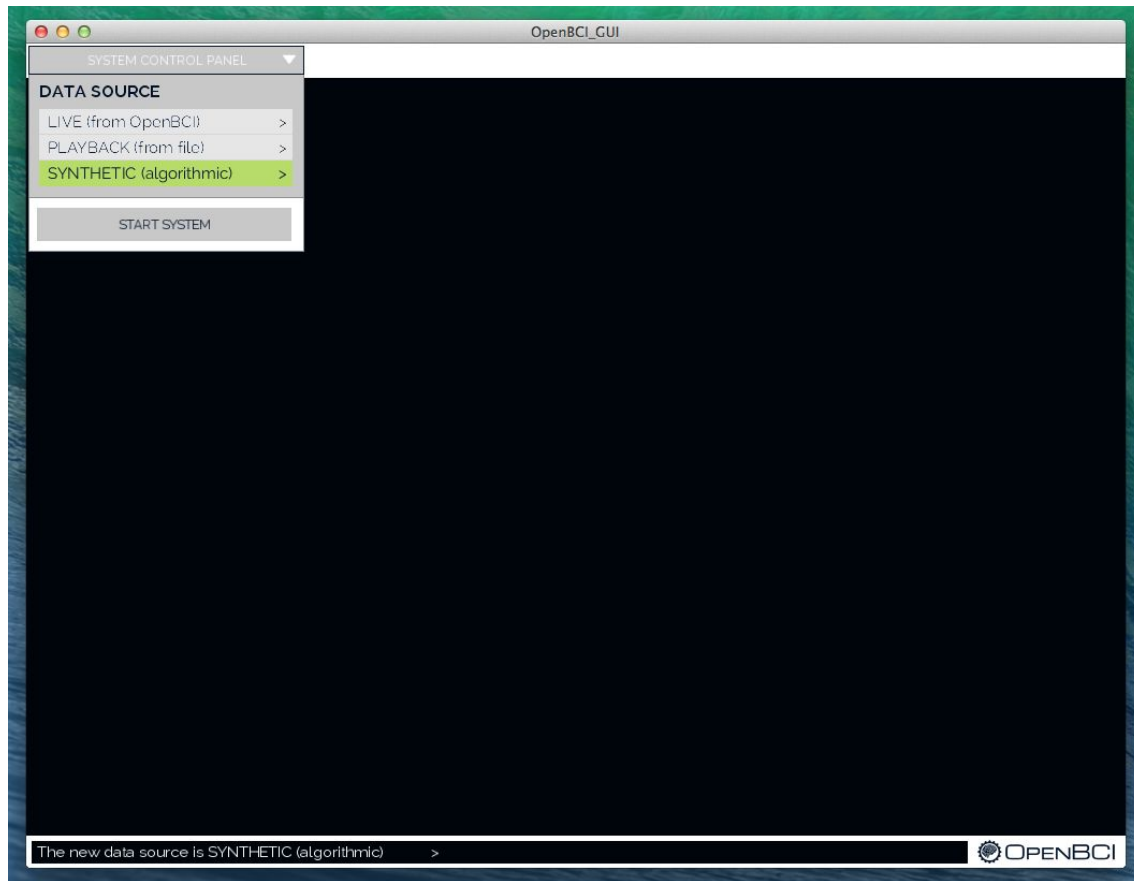
Turn on OpenBCI



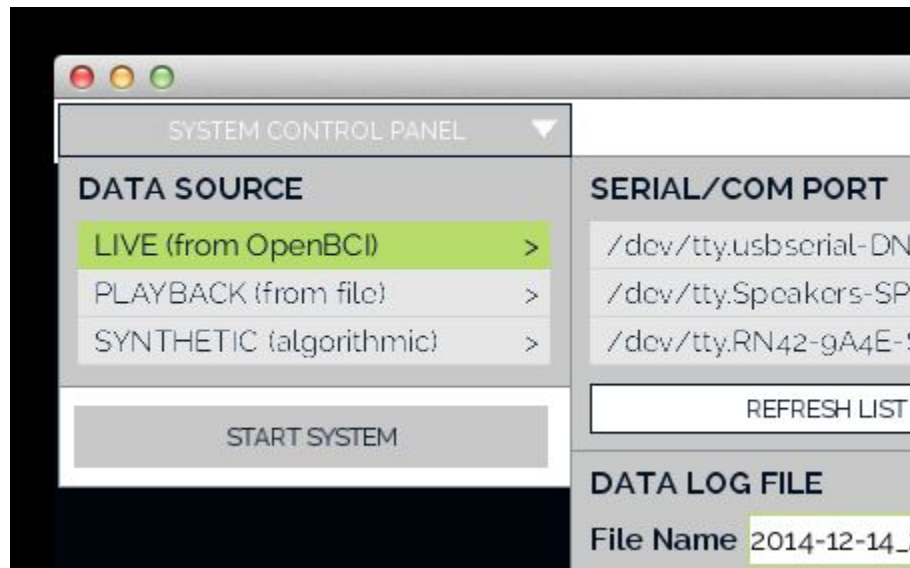
Check that communication exists (blinky blue LED)



Open OpenBCI GUI



Follow steps to stream data



Visually check signal quality

